

# Standard Dental Radiograph Document Preparation

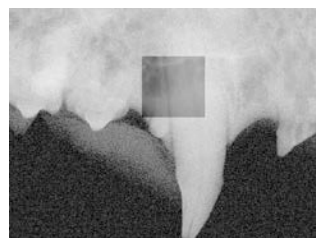
<b>Layout</b>	<p>Please read the EVDC Guide – “Radiograph Submission Requirements” carefully. This template is based on a feline radiograph series. It will need adapting to include additional images as appropriate.</p>
<b>Image import</b>	<p>The obviously modified images used in the template can be replaced with your own unmodified images by selecting the image in question and then importing the replacement image. The replacement image will then have the same layout properties as the old one. If additional images are required, the easiest solution is to copy an existing image and paste it back as an additional image. this should then have the same layout properties. If a new image is imported directly, it will need to have its properties set: Right-click: Properties: Layout: In front of text. This permits the image to be dragged and positioned.</p>
<b>Image position</b>	<p>Be aware that inserting lines of text will alter the position of some images.</p>
<b>Hidden text</b>	<p>Also be aware that text labels may become hidden behind images.</p>
<b>Labelling</b>	<p>Use of text boxes for labels can be easier than using text directly in the main page. Indicate the tooth or teeth that can be adequately assessed for each image using the Modified Triadan numbering system. This system indicates the quadrant so there is no need to label maxilla, mandible, left, right. If extra-oral placement has been used, label the image E/O. Images without this label will be assessed as intra-oral radiographs If a particular root should be assessed in a particular image then label using tooth number and mesial/distal/palatal root as appropriate.</p>
<b>Cropping</b>	<p>The images should only be cropped to remove unused areas</p>
<b>Resolution</b>	<p>Import bitmap (digital or scanned) or high quality JPEG images of 300dpi (dog) to 400dpi (eg. small cat). 25mm = 1 inch requiring 300 or more pixels to provide adequate resolution for on-screen magnification.</p>
<b>Title</b>	<p>Delete the inappropriate species name and replace YYYY-MM-DD with the date the radiographs were obtained.</p>
<b>Images</b>	<p>Replace the modified images below with your unmodified radiographs, scaling them to life size.</p>
<b>Size</b>	<p>For medium to large breed dogs it may be necessary to change the “paper” size from A4 to A3 (File Menu: Page setup: Paper: Page size) so that all images fit on the same page.</p>
<b>PDF</b>	<p>Once the document is formatted, deletethis guidance text and “print” the document to a PDF file generator (do not save-as PDF). The PDF generator used must be set up in ENGLISH with an anonymous registration name. Check the properties of the PDF document for any compromising text. Save the PDF file using an ENGLISH file name.</p>
<b>Help</b>	<p>If you have problems, contact the EVDC Secretary or your designated member of the Training Support Committee.</p>

# CANINE / FELINE DENTAL RADIOGRAPH SET : YYYY-MM-DD

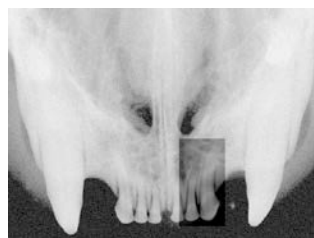
E/O 109. 108. 107. 106



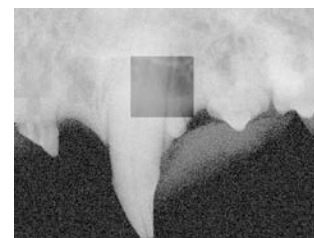
107. 106. 104



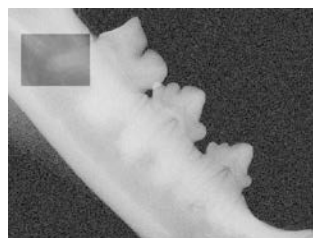
103 – 203



204. 206. 207



E/O 206. 207. 208. 209



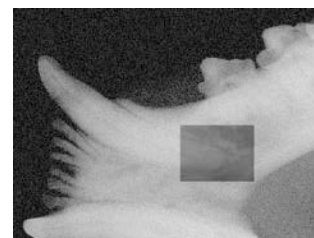
409. 408. 407



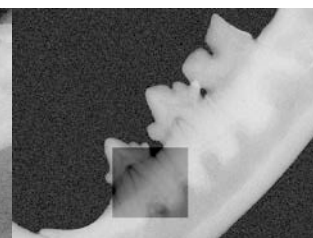
404. 403



403 – 303



303. 304



307. 308. 309